



Objectives

- **Describe** the purpose of the scientific method.
- **Distinguish** between qualitative and quantitative observations.
- **Describe** the differences between hypotheses, theories, and models.



Chapter menu

Resources





Scientific Method

- The **scientific method** is a logical approach to solving problems by observing and collecting data, formulating hypotheses, testing hypotheses, and formulating theories that are supported by data.



Chapter menu

Resources





Observing and Collecting Data

- *Observing* is the use of the senses to obtain information.
- data may be
 - *qualitative* (descriptive)
 - *quantitative* (numerical)
- A **system** is a specific portion of matter in a given region of space that has been selected for study during an experiment or observation.



Chapter menu

Resources





Formulating Hypotheses

- Scientists make generalizations based on the data.
- Scientists use generalizations about the data to formulate a **hypothesis**, or testable statement.
 - Hypotheses are often “if-then” statements.



Chapter menu

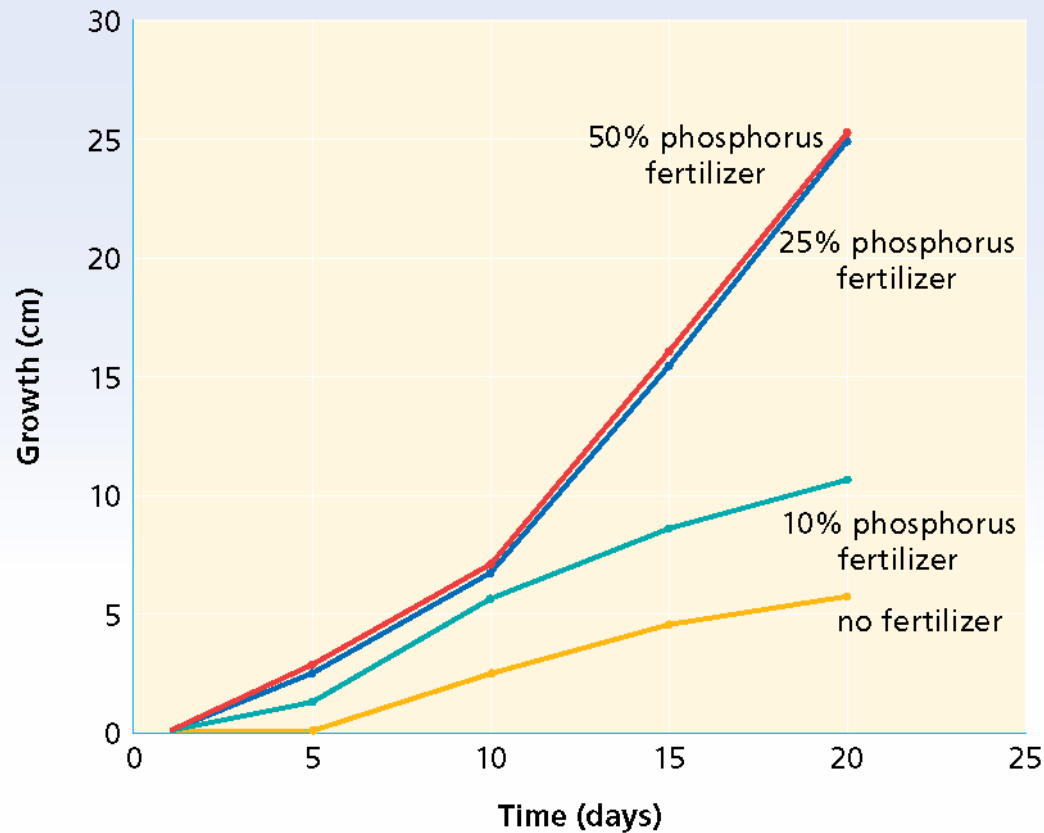
Resources





Formulating Hypotheses

Plant Growth Vs. Time



Chapter menu

Resources





Testing Hypotheses

- Testing a hypothesis requires experimentation that provides data to support or refute a hypothesis or theory.
- *Controls* are the experimental conditions that remain constant.
- *Variables* are any experimental conditions that change.



Chapter menu

Resources





Theorizing

- A **model** in science is more than a physical object; it is often an explanation of how phenomena occur and how data or events are related.
 - visual, verbal, or mathematical
 - example: atomic model of matter
- A **theory** is a broad generalization that explains a body of facts or phenomena.
 - example: atomic theory



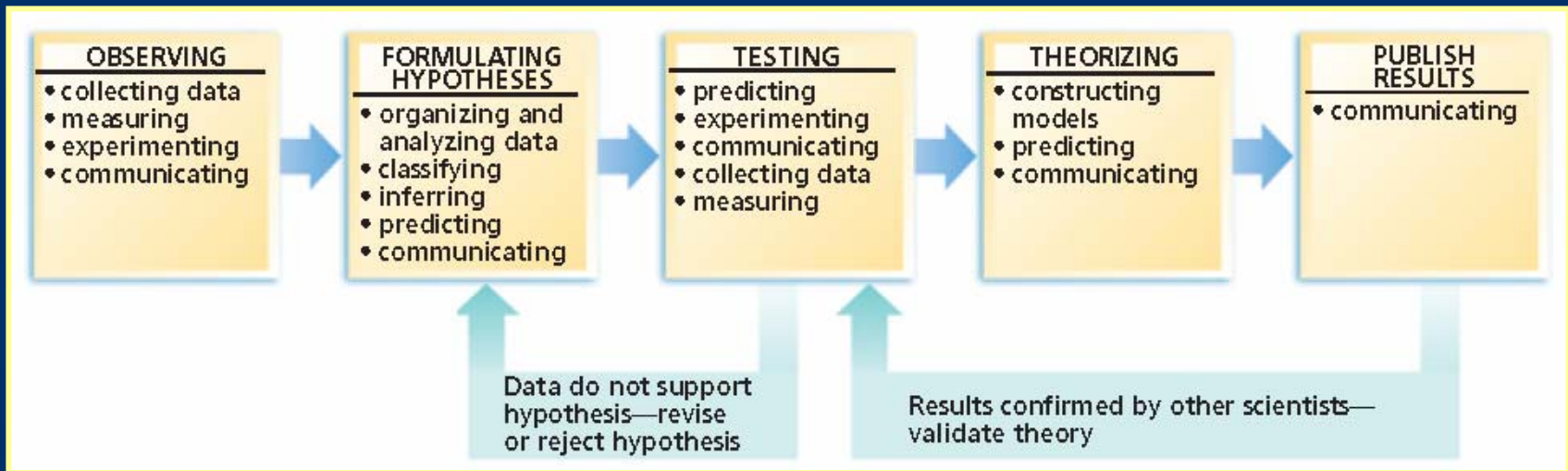
Chapter menu

Resources





Scientific Method





Objectives

- **Distinguish** between a quantity, a unit, and a measurement standard.
- **Name** and **use** SI units for length, mass, time, volume, and density.
- **Distinguish** between mass and weight.
- **Perform** density calculations.
- **Transform** a statement of equality into conversion factor.



Chapter menu

Resources





Units of Measurement

- Measurements represent quantities.
- A **quantity** is something that has magnitude, size, or amount.
- measurement \neq quantity
 - the teaspoon is a unit of measurement
 - volume is a quantity
- The choice of unit depends on the quantity being measured.



Chapter menu

Resources





SI Measurement

- Scientists all over the world have agreed on a single measurement system called Le Système International d'Unités, abbreviated **SI**.
- SI has seven base units
 - most other units are derived from these seven



Chapter menu

Resources





SI (Le Système International d'Unités)

| Common SI Units | | |
|---|--|---|
| Length  | meter (m) kilometer (km) decimeter (dm) centimeter (cm) millimeter (mm) micrometer (μm) nanometer (nm) | $1 \text{ km} = 1,000 \text{ m}$ $1 \text{ dm} = 0.1 \text{ m}$ $1 \text{ cm} = 0.01 \text{ m}$ $1 \text{ mm} = 0.001 \text{ m}$ $1 \mu\text{m} = 0.000\,001 \text{ m}$ $1 \text{ nm} = 0.000\,000\,001 \text{ m}$ |
| Volume  | cubic meter (m^3) cubic centimeter (cm^3) liter (L) milliliter (mL) | $1 \text{ cm}^3 = 0.000\,001 \text{ m}^3$ $1 \text{ L} = 1 \text{ dm}^3 = 0.001 \text{ m}^3$ $1 \text{ mL} = 0.001 \text{ L} = 1 \text{ cm}^3$ |
| Mass  | kilogram (kg) gram (g) milligram (mg) | $1 \text{ g} = 0.001 \text{ kg}$ $1 \text{ mg} = 0.000\,001 \text{ kg}$ |
| Temperature  | Kelvin (K) Celcius ($^{\circ}\text{C}$) | $0^{\circ}\text{C} = 273 \text{ K}$ $100^{\circ}\text{C} = 373 \text{ K}$ |



Chapter menu

Resources





SI Base Units

| Quantity | Quantity symbol | Unit name | Unit abbreviation | Defined standard |
|---------------------|----------------------|-----------|-------------------|---|
| Length | <i>l</i> | meter | m | the length of the path traveled by light in a vacuum during a time interval of 1/299 792 458 of a second |
| Mass | <i>m</i> | kilogram | kg | the unit of mass equal to the mass of the international prototype of the kilogram |
| Time | <i>t</i> | second | s | the duration of 9 192 631 770 periods of the radiation corresponding to the transition between the two hyperfine levels of the ground state of the cesium-133 atom |
| Temperature | <i>T</i> | kelvin | K | the fraction 1/273.16 of the thermodynamic temperature of the triple point of water |
| Amount of substance | <i>n</i> | mole | mol | the amount of substance of a system which contains as many elementary entities as there are atoms in 0.012 kilogram of carbon-12 |
| Electric current | <i>I</i> | ampere | A | the constant current which, if maintained in two straight parallel conductors of infinite length, of negligible circular cross section, and placed 1 meter apart in vacuum, would produce between these conductors a force equal to 2×10^{-7} newton per meter of length |
| Luminous intensity | <i>I_v</i> | candela | cd | the luminous intensity, in a given direction, of a source that emits monochromatic radiation of frequency 540×10^{12} hertz and that has a radiant intensity in that direction of 1/683 watt per steradian |





SI Base Units

Mass

- Mass is a measure of the quantity of matter.
- The SI standard unit for mass is the kilogram.
- **Weight** is a measure of the gravitational pull on matter.
- Mass **does not** depend on gravity.



Chapter menu

Resources





SI Base Units Length

- Length is a measure of distance.
- The SI standard for length is the **meter**.
- The **kilometer**, km, is used to express longer distances
- The **centimeter**, cm, is used to express shorter distances



Chapter menu

Resources





Derived SI Units

- Combinations of SI base units form **derived units**.
 - pressure is measured in $\text{kg/m}\cdot\text{s}^2$, or *pascals*

| Quantity | Quantity symbol | Unit | Unit abbreviation | Derivation |
|--------------|-----------------|---------------------------|---------------------------------|--|
| Area | A | square meter | m^2 | length \times width |
| Volume | V | cubic meter | m^3 | length \times width \times height |
| Density | D | kilograms per cubic meter | $\frac{\text{kg}}{\text{m}^3}$ | $\frac{\text{mass}}{\text{volume}}$ |
| Molar mass | M | kilograms per mole | $\frac{\text{kg}}{\text{mol}}$ | $\frac{\text{mass}}{\text{amount of substance}}$ |
| Molar volume | V_m | cubic meters per mole | $\frac{\text{m}^3}{\text{mol}}$ | $\frac{\text{volume}}{\text{amount of substance}}$ |
| Energy | E | joule | J | force \times length |





Derived SI Units, *continued* Volume

- **Volume** is the amount of space occupied by an object.
 - The derived SI unit is cubic meters, m^3
 - The cubic centimeter, cm^3 , is often used
 - The liter, L, is a non-SI unit
 - $1\text{ L} = 1000\text{ cm}^3$
 - $1\text{ mL} = 1\text{ cm}^3$



Chapter menu

Resources





Derived SI Units, *continued*

Density

- **Density** is the ratio of mass to volume, or mass divided by volume.

$$\text{density} = \frac{\text{mass}}{\text{volume}} \text{ or } D = \frac{m}{V}$$

- The derived SI unit is kilograms per cubic meter, kg/m^3
- g/cm^3 or g/mL are also used
- Density is a characteristic physical property of a substance.

[Chapter menu](#)[Resources](#)



Derived SI Units, *continued*

Density

- Density can be used as one property to help identify a substance

| Solids | Density at 20°C (g/cm ³) | Liquids | Density at 20°C (g/mL) |
|---------|--------------------------------------|---------------|------------------------|
| cork | 0.24* | gasoline | 0.67* |
| butter | 0.86 | ethyl alcohol | 0.791 |
| ice | 0.92 [†] | kerosene | 0.82 |
| sucrose | 1.59 | turpentine | 0.87 |
| bone | 1.85* | water | 0.998 |
| diamond | 3.26* | sea water | 1.025** |
| copper | 8.92 | milk | 1.031* |
| lead | 11.35 | mercury | 13.6 |

[†] measured at 0°C

* typical density

** measured at 15°C



Chapter menu

Resources





Derived SI Units, *continued*

Sample Problem A

A sample of aluminum metal has a mass of 8.4 g. The volume of the sample is 3.1 cm³. Calculate the density of aluminum.



Chapter menu

Resources





Derived SI Units, *continued*

Sample Problem A Solution

Given: mass (m) = 8.4 g
volume (V) = 3.1 cm³

Unknown: density (D)

Solution:

$$\text{density} = \frac{\text{mass}}{\text{volume}} = \frac{8.4 \text{ g}}{3.1 \text{ cm}^3} = 2.7 \text{ g / cm}^3$$



Chapter menu

Resources





Conversion Factors

- A **conversion factor** is a ratio derived from the equality between two different units that can be used to convert from one unit to the other.
 - example: How quarters and dollars are related

$$\frac{4 \text{ quarters}}{1 \text{ dollar}} = 1$$

$$\frac{1 \text{ dollar}}{4 \text{ quarters}} = 1$$

$$\frac{0.25 \text{ dollar}}{1 \text{ quarters}} = 1$$

$$\frac{1 \text{ quarter}}{0.25 \text{ dollar}} = 1$$

[Chapter menu](#)[Resources](#)



Conversion Factors, *continued*

- **Dimensional analysis** is a mathematical technique that allows you to use units to solve problems involving measurements.

- quantity sought = quantity given \times conversion factor

- example: the number of quarters in 12 dollars

number of quarters = 12 dollars \times conversion factor

$$? \text{ quarters} = 12 \text{ dollars} \times \frac{4 \text{ quarter}}{1 \text{ dollar}} = 48 \text{ quarters}$$



Chapter menu

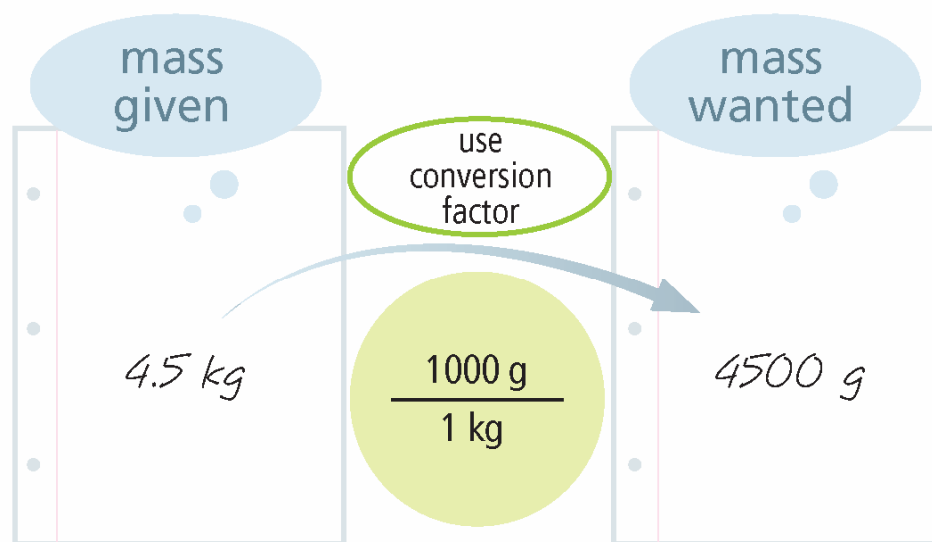
Resources





Using Conversion Factors

1. Identify the quantity and unit given and the unit that you want to convert to.
2. Using the equality that relates the two units, set up the conversion factor that cancels the given unit and leaves the unit that you want to convert to.
3. Multiply the given quantity by the conversion factor. Cancel units to verify that the units left are the ones you want for your answer.





Conversion Factors, *continued* Deriving Conversion Factors

- You can derive conversion factors if you know the relationship between the unit you have and the unit you want.
- example: conversion factors for meters and decimeters

$$\frac{1 \text{ m}}{10 \text{ dm}}$$

$$\frac{0.1 \text{ m}}{\text{dm}}$$

$$\frac{10 \text{ dm}}{\text{m}}$$



Chapter menu

Resources





SI Conversions

Key problem-solving approach:
SI conversions

Base Unit*

meter, m
seconds, s
ampere, A
mole, mol
candela, cd

giga (g) $\xrightarrow{\times 10^9}$
 $\xleftarrow{\div 10^9}$

mega (M) $\xrightarrow{\times 10^6}$
 $\xleftarrow{\div 10^6}$

kilo (k) $\xrightarrow{\times 10^3}$
 $\xleftarrow{\div 10^3}$

$\xleftarrow{\div 10^2}$ centi (c)
 $\xrightarrow{\times 10^2}$

$\xleftarrow{\div 10^3}$ milli (m)
 $\xrightarrow{\times 10^3}$

$\xleftarrow{\div 10^6}$ micro (μ)
 $\xrightarrow{\times 10^6}$

$\xleftarrow{\div 10^9}$ nano (n)
 $\xrightarrow{\times 10^9}$

$\xleftarrow{\div 10^{12}}$ pico (p)
 $\xrightarrow{\times 10^{12}}$

*Kilogram, the base unit for mass, does not appear in this list because it has a different set of conversion values (1 kg = 1000 g).



Conversion Factors, *continued*

Sample Problem B

Express a mass of 5.712 grams in milligrams and in kilograms.



Chapter menu

Resources





Conversion Factors, *continued*

Sample Problem B Solution

Express a mass of 5.712 grams in milligrams and in kilograms.

Given: 5.712 g

Unknown: mass in mg and kg

Solution: mg

$$1 \text{ g} = 1000 \text{ mg}$$

Possible conversion factors: $\frac{1000 \text{ mg}}{\text{g}}$ and $\frac{1 \text{ g}}{1000 \text{ mg}}$

$$5.712 \cancel{\text{g}} \times \frac{1000 \text{ mg}}{\cancel{\text{g}}} = 5712 \text{ mg}$$





Conversion Factors, *continued*

Sample Problem B Solution, *continued*

Express a mass of 5.712 grams in milligrams and in kilograms.

Given: 5.712 g

Unknown: mass in mg and kg

Solution: kg

$$1\ 000\ \text{g} = 1\ \text{kg}$$

Possible conversion factors: $\frac{1000\ \text{g}}{\text{kg}}$ and $\frac{1\ \text{kg}}{1000\ \text{g}}$

$$5.712\ \cancel{\text{g}} \times \frac{1\ \text{kg}}{1000\ \cancel{\text{g}}} = 0.005712\ \text{kg}$$





Objectives

- **Distinguish** between accuracy and precision.
- **Determine** the number of significant figures in measurements.
- **Perform** mathematical operations involving significant figures.
- **Convert** measurements into scientific notation.
- **Distinguish** between inversely and directly proportional relationships.



Chapter menu

Resources





Accuracy and Precision

- **Accuracy** refers to the closeness of measurements to the correct or accepted value of the quantity measured.
- **Precision** refers to the closeness of a set of measurements of the same quantity made in the same way.



Chapter menu

Resources





Accuracy and Precision



a Darts within the bull's-eye mean high accuracy and high precision.



b Darts clustered within a small area but far from the bull's-eye mean low accuracy and high precision.



c Darts scattered around the target and far from the bull's-eye mean low accuracy and low precision.



Accuracy and Precision, *continued* Percentage Error

- **Percentage error** is calculated by subtracting the accepted value from the experimental value, dividing the difference by the accepted value, and then multiplying by 100.

$$\text{Percentage error} = \frac{\text{Value}_{\text{experimental}} - \text{Value}_{\text{accepted}}}{\text{Value}_{\text{accepted}}} \times 100$$



Chapter menu

Resources





Accuracy and Precision, *continued*

Sample Problem C

A student measures the mass and volume of a substance and calculates its density as 1.40 g/mL. The correct, or accepted, value of the density is 1.30 g/mL. What is the percentage error of the student's measurement?



Chapter menu

Resources





Accuracy and Precision, *continued*

Sample Problem C Solution

$$\text{Percentage error} = \frac{\text{Value}_{\text{experimental}} - \text{Value}_{\text{accepted}}}{\text{Value}_{\text{accepted}}} \times 100$$

$$= \frac{1.40 \text{ g/mL} - 1.30 \text{ g/mL}}{1.30 \text{ g/mL}} \times 100 = 7.7\%$$



Chapter menu

Resources





Accuracy and Precision, *continued* Error in Measurement

- Some error or uncertainty always exists in any measurement.
 - skill of the measurer
 - conditions of measurement
 - measuring instruments



Chapter menu

Resources





Significant Figures

- **Significant figures** in a measurement consist of all the digits known with certainty plus one final digit, which is somewhat uncertain or is estimated.
- The term significant **does not** mean certain.

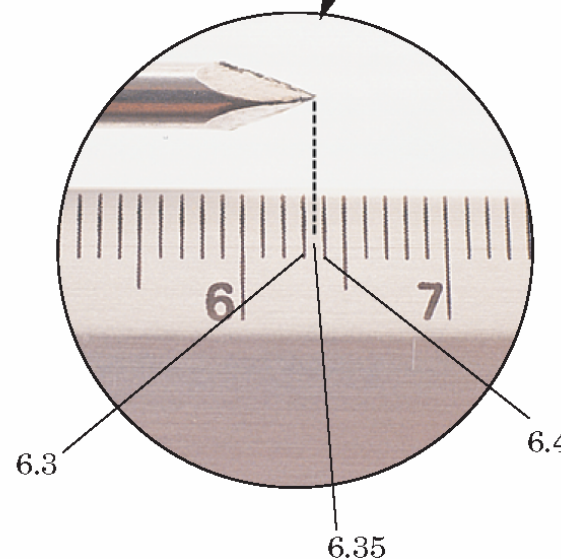
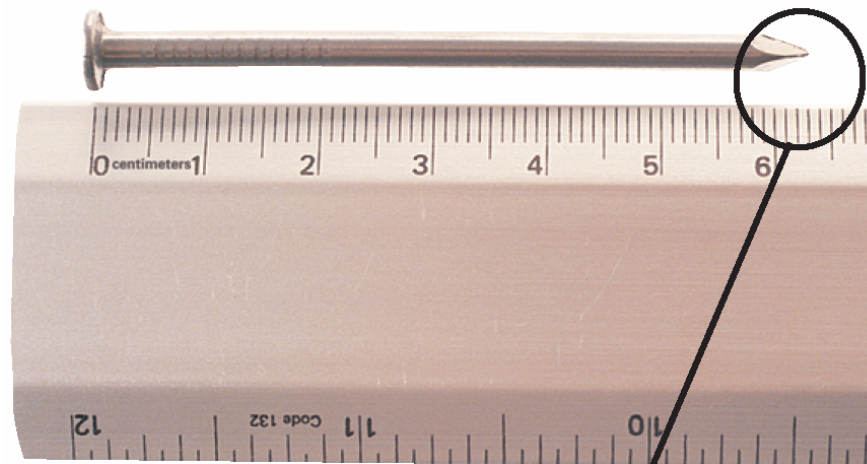


Chapter 2

Section 3 Using Scientific Measurements



Reporting Measurements Using Significant Figures



[Chapter menu](#)

[Resources](#)



Significant Figures, *continued*

Determining the Number of Significant Figures

| Rule | Examples |
|--|---|
| 1. Zeros appearing between nonzero digits are significant. | a. 40.7 L has three significant figures. b. 87 009 km has five significant figures. |
| 2. Zeros appearing in front of all nonzero digits are not significant. | a. 0.095 897 m has five significant figures. b. 0.0009 kg has one significant figure. |
| 3. Zeros at the end of a number and to the right of a decimal point are significant. | a. 85.00 g has four significant figures. b. 9.000 000 000 mm has 10 significant figures. |
| 4. Zeros at the end of a number but to the left of a decimal point may or may not be significant. If a zero has not been measured or estimated but is just a placeholder, it is not significant. A decimal point placed after zeros indicates that they are significant. | a. 2000 m may contain from one to four significant figures, depending on how many zeros are placeholders. For measurements given in this text, assume that 2000 m has one significant figure. b. 2000. m contains four significant figures, indicated by the presence of the decimal point. |





Significant Figures, *continued*

Sample Problem D

How many significant figures are in each of the following measurements?

- a. 28.6 g
- b. 3440. cm
- c. 910 m
- d. 0.046 04 L
- e. 0.006 700 0 kg



Chapter menu

Resources





Significant Figures, *continued* Sample Problem D Solution

a. 28.6 g

There are no zeros, so all three digits are significant.

b. 3440. cm

By rule 4, the zero is significant because it is immediately followed by a decimal point; there are 4 significant figures.

c. 910 m

By rule 4, the zero is not significant; there are 2 significant figures.



Chapter menu

Resources





Significant Figures, *continued*

Sample Problem D Solution, *continued*

d. 0.046 04 L

By rule 2, the first two zeros are not significant; by rule 1, the third zero is significant; there are 4 significant figures.

e. 0.006 700 0 kg

By rule 2, the first three zeros are not significant; by rule 3, the last three zeros are significant; there are 5 significant figures.



Chapter menu

Resources





Significant Figures, *continued* Rounding

| If the digit following the last digit to be retained is: | then the last digit should: | Example (rounded to three significant figures) |
|--|-----------------------------|---|
| greater than 5 | be increased by 1 | 42.68 g \longrightarrow 42.7 g |
| less than 5 | stay the same | 17.32 m \longrightarrow 17.3 m |
| 5, followed by nonzero digit(s) | be increased by 1 | 2.7851 cm \longrightarrow 2.79 cm |
| 5, not followed by nonzero digit(s), and preceded by an odd digit | be increased by 1 | 4.635 kg \longrightarrow 4.64 kg (because 3 is odd) |
| 5, not followed by nonzero digit(s), and the preceding significant digit is even | stay the same | 78.65 mL \longrightarrow 78.6 mL (because 6 is even) |





Significant Figures, *continued*

Addition or Subtraction with Significant Figures

- When adding or subtracting decimals, the answer must have the same number of digits to the right of the decimal point as there are in the measurement having the fewest digits to the right of the decimal point.

Addition or Subtraction with Significant Figures

- For multiplication or division, the answer can have no more significant figures than are in the measurement with the fewest number of significant figures.



Chapter menu

Resources





Significant Figures, *continued*

Sample Problem E

Carry out the following calculations. Express each answer to the correct number of significant figures.

a. $5.44 \text{ m} - 2.6103 \text{ m}$

b. $2.4 \text{ g/mL} \times 15.82 \text{ mL}$



Chapter menu

Resources





Significant Figures, *continued*

Sample Problem E Solution

a. $5.44 \text{ m} - 2.6103 \text{ m} = 2.84 \text{ m}$

There should be two digits to the right of the decimal point, to match 5.44 m.

b. $2.4 \text{ g/mL} \times 15.82 \text{ mL} = 38 \text{ g}$

There should be two significant figures in the answer, to match 2.4 g/mL.



Chapter menu

Resources





Significant Figures, *continued*

Conversion Factors and Significant Figures

- There is no uncertainty exact conversion factors.
- Most exact conversion factors are defined quantities.



Chapter menu

Resources





Scientific Notation

- In **scientific notation**, numbers are written in the form $M \times 10^n$, where the factor M is a number greater than or equal to 1 but less than 10 and n is a whole number.
- example: $0.00012 \text{ mm} = 1.2 \times 10^{-4} \text{ mm}$



Move the decimal point four places to the right, and multiply the number by 10^{-4} .



Chapter menu

Resources





Scientific Notation, *continued*

1. Determine M by moving the decimal point in the original number to the left or the right so that only one nonzero digit remains to the left of the decimal point.
2. Determine n by counting the number of places that you moved the decimal point. If you moved it to the left, n is positive. If you moved it to the right, n is negative.



Chapter menu

Resources





Scientific Notation, *continued*

Mathematical Operations Using Scientific Notation

1. **Addition and subtraction** — These operations can be performed only if the values have the same exponent (n factor).

example: $4.2 \times 10^4 \text{ kg} + 7.9 \times 10^3 \text{ kg}$

$$\begin{array}{r} 4.2 \times 10^4 \text{ kg} \\ +0.79 \times 10^4 \text{ kg} \\ \hline \end{array}$$

$$\begin{array}{r} 4.99 \times 10^4 \text{ kg} \\ \text{rounded to } 5.0 \times 10^4 \text{ kg} \end{array}$$

or

$$\begin{array}{r} 7.9 \times 10^3 \text{ kg} \\ +42 \times 10^3 \text{ kg} \\ \hline \end{array}$$

$$\begin{array}{r} 49.9 \times 10^3 \text{ kg} = 4.99 \times 10^4 \text{ kg} \\ \text{rounded to } 5.0 \times 10^4 \text{ kg} \end{array}$$



Chapter menu

Resources





Scientific Notation, *continued*

Mathematical Operations Using Scientific Notation

2. **Multiplication** —The M factors are multiplied, and the exponents are added algebraically.

example: $(5.23 \times 10^6 \mu\text{m})(7.1 \times 10^{-2} \mu\text{m})$

$$= (5.23 \times 7.1)(10^6 \times 10^{-2})$$

$$= 37.133 \times 10^4 \mu\text{m}^2$$

$$= 3.7 \times 10^5 \mu\text{m}^2$$



Chapter menu

Resources





Scientific Notation, *continued*

Mathematical Operations Using Scientific Notation

3. Division — The M factors are divided, and the exponent of the denominator is subtracted from that of the numerator.

example:
$$\frac{5.44 \times 10^7 \text{ g}}{8.1 \times 10^4 \text{ mol}}$$

$$= \frac{5.44}{8.1} \times 10^{7-4} \text{ g/mol}$$

$$= 0.6716049383 \times 10^3$$

$$= 6.7 \times 10^2 \text{ g/mol}$$



Chapter menu

Resources





Using Sample Problems

- **Analyze**

The first step in solving a quantitative word problem is to read the problem carefully at least twice and to analyze the information in it.

- **Plan**

The second step is to develop a plan for solving the problem.

- **Compute**

The third step involves substituting the data and necessary conversion factors into the plan you have developed.



Chapter menu

Resources





Using Sample Problems, *continued*

- **Evaluate**

Examine your answer to determine whether it is reasonable.

1. Check to see that the units are correct.
2. Make an estimate of the expected answer.
3. Check the order of magnitude in your answer.
4. Be sure that the answer given for any problem is expressed using the correct number of significant figures.



Chapter menu

Resources





Using Sample Problems, *continued*

Sample Problem F

Calculate the volume of a sample of aluminum that has a mass of 3.057 kg. The density of aluminum is 2.70 g/cm^3 .



Chapter menu

Resources





Using Sample Problems, *continued*

Sample Problem F Solution

1. Analyze

Given: mass = 3.057 kg, density = 2.70 g/cm³

Unknown: volume of aluminum

2. Plan

The density unit is g/cm³, and the mass unit is kg.

conversion factor: 1000 g = 1 kg

Rearrange the density equation to solve for volume.

$$D = \frac{m}{V} \Rightarrow V = \frac{m}{D}$$



Chapter menu

Resources





Using Sample Problems, *continued*

Sample Problem F Solution, *continued*

3. Compute

$$V = \frac{3.057 \text{ kg}}{2.70 \text{ g/cm}^3} \times \frac{1000 \text{ g}}{\text{kg}}$$

$$= 1132.222 \dots \text{ cm}^3 \text{ (calculator answer)}$$

round answer to three significant figures

$$V = 1.13 \times 10^3 \text{ cm}^3$$



Chapter menu

Resources





Using Sample Problems, *continued* Sample Problem F Solution, *continued*

4. Evaluate

Answer: $V = 1.13 \times 10^3 \text{ cm}^3$

- The unit of volume, cm^3 , is correct.
- An order-of-magnitude estimate would put the answer at over 1000 cm^3 .

$$\frac{3}{2} \times 1000$$

- The correct number of significant figures is three, which matches that in 2.70 g/cm .



Chapter menu

Resources





Direct Proportions

- Two quantities are **directly proportional** to each other if dividing one by the other gives a constant value.
- $y \propto x$
 - read as “y is proportional to x.”



Chapter menu

Resources



Chapter 2

Section 3 Using Scientific Measurements

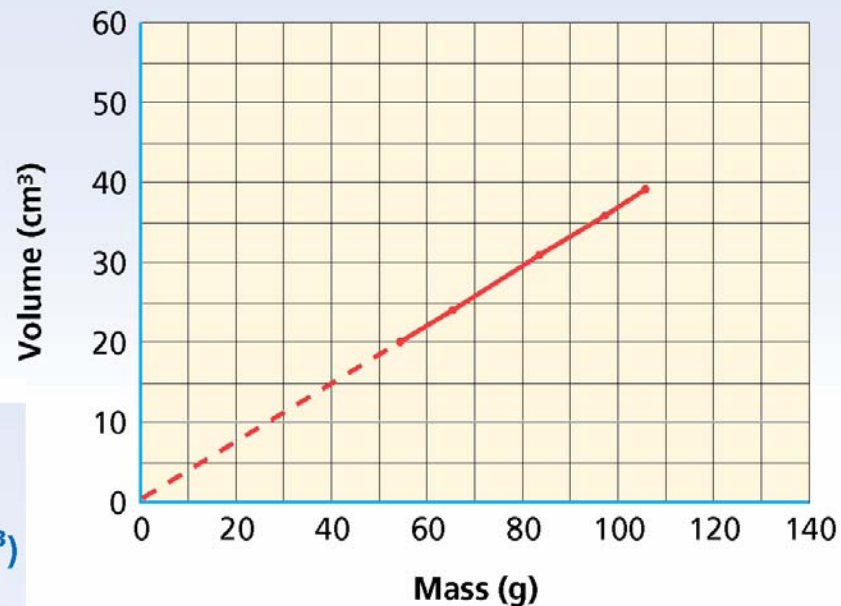


Direct Proportion

Mass-Volume Data for Aluminum at 20°C

| Mass (g) | Volume (cm ³) | $\frac{m}{V}$ (g/cm ³) |
|----------|---------------------------|------------------------------------|
| 54.4 | 20.1 | 2.70 |
| 65.7 | 24.15 | 2.72 |
| 83.5 | 30.9 | 2.70 |
| 97.2 | 35.8 | 2.71 |
| 105.7 | 39.1 | 2.70 |

Mass vs. Volume of Aluminum



[Chapter menu](#)

[Resources](#)



Inverse Proportions

- Two quantities are **inversely proportional** to each other if their product is constant.

- $y \propto \frac{1}{x}$

- read as “y is proportional to 1 divided by x.”



Chapter menu

Resources



Chapter 2

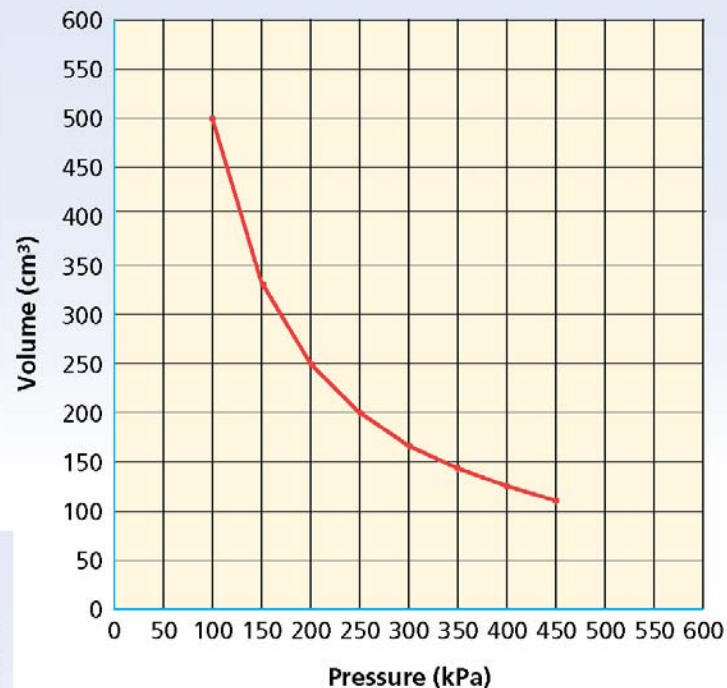
Section 3 Using Scientific Measurements

Inverse Proportion

Pressure-Volume Data for Nitrogen at Constant Temperature

| Pressure (kPa) | Volume (cm ³) | $P \times V$ |
|----------------|---------------------------|--------------|
| 100 | 500 | 50 000 |
| 150 | 333 | 49 500 |
| 200 | 250 | 50 000 |
| 250 | 200 | 50 000 |
| 300 | 166 | 49 800 |
| 350 | 143 | 50 500 |
| 400 | 125 | 50 000 |
| 450 | 110 | 49 500 |

Volume vs. Pressure of Nitrogen



Chapter menu

Resources



Multiple Choice

1. Which of the following masses is the largest?

- A. 0.200 g
- B. 0.020 kg
- C. 20.0 mg
- D. 2000 μg





Multiple Choice

1. Which of the following masses is the largest?

- A. 0.200 g
- B. 0.020 kg
- C. 20.0 mg
- D. 2000 μg





Multiple Choice

2. Which of the following measurements contains three significant figures?
- A. 200 mL
 - B. 0.02 mL
 - C. 20.2 mL
 - D. 200.0 mL





Multiple Choice

2. Which of the following measurements contains three significant figures?

- A. 200 mL
- B. 0.02 mL
- C. 20.2 mL
- D. 200.0 mL





Multiple Choice

3. A theory differs from a hypothesis in that a theory
- A. cannot be disproved.
 - B. always leads to the formation of a law.
 - C. has been subjected to experimental testing.
 - D. represents an educated guess.





Multiple Choice

3. A theory differs from a hypothesis in that a theory
- A. cannot be disproved.
 - B. always leads to the formation of a law.
 - C. has been subjected to experimental testing.
 - D. represents an educated guess.





Multiple Choice

4. All measurements in science

- A. must be expressed in scientific notation.
- B. have some degree of uncertainty.
- C. are both accurate and precise.
- D. must include only those digits that are known with certainty.





Multiple Choice

4. All measurements in science

- A. must be expressed in scientific notation.
- B. have some degree of uncertainty.
- C. are both accurate and precise.
- D. must include only those digits that are known with certainty.





Multiple Choice

5. When numbers are multiplied or divided, the answer can have no more
- A. significant figures than are in the measurement that has the smallest number of significant figures.
 - B. significant figures than are in the measurement that has the largest number of significant figures.
 - C. digits to the right of the decimal point than are in the measurement that has the smallest number of digits to the right of the decimal point.
 - D. digits to the right of the decimal point than are in the measurement that has the largest number of digits to the right of the decimal point.





Multiple Choice

5. When numbers are multiplied or divided, the answer can have no more
- A. significant figures than are in the measurement that has the smallest number of significant figures.
 - B. significant figures than are in the measurement that has the largest number of significant figures.
 - C. digits to the right of the decimal point than are in the measurement that has the smallest number of digits to the right of the decimal point.
 - D. digits to the right of the decimal point than are in the measurement that has the largest number of digits to the right of the decimal point.





Multiple Choice

6. Which of the following is not part of the scientific method?
- A. making measurements
 - B. introducing bias
 - C. making an educated guess
 - D. analyzing data





Multiple Choice

6. Which of the following is not part of the scientific method?
- A. making measurements
 - B. introducing bias
 - C. making an educated guess
 - D. analyzing data





Multiple Choice

7. The accuracy of a measurement

- A. is how close it is to the true value.
- B. does not depend on the instrument used to measure the object.
- C. indicates that the measurement is also precise.
- D. is something that scientists rarely achieve.





Multiple Choice

7. The accuracy of a measurement

- A. is how close it is to the true value.
- B. does not depend on the instrument used to measure the object.
- C. indicates that the measurement is also precise.
- D. is something that scientists rarely achieve.





Multiple Choice

8. A measurement of 23 465 mg converted to grams equals
- A. 2.3465 g.
 - B. 23.465 g.
 - C. 234.65 g.
 - D. 0.23465 g.





Multiple Choice

8. A measurement of 23 465 mg converted to grams equals
- A. 2.3465 g.
 - B. 23.465 g.
 - C. 234.65 g.
 - D. 0.23465 g.





Multiple Choice

9. A metal sample has a mass of 45.65 g. The volume of the sample is 16.9 cm³. The density of the sample is
- A. 2.7 g/cm³.
 - B. 2.70 g/cm³.
 - C. 0.370 g/cm³.
 - D. 0.37 g/cm³.





Multiple Choice

9. A metal sample has a mass of 45.65 g. The volume of the sample is 16.9 cm³. The density of the sample is
- A. 2.7 g/cm³.
 - B. 2.70 g/cm³.
 - C. 0.370 g/cm³.
 - D. 0.37 g/cm³.





Short Answer

10. A recipe for 18 cookies calls for 1 cup of chocolate chips. How many cups of chocolate chips are needed for 3 dozen cookies? What kind of proportion, direct or indirect, did you use to answer this question?





Short Answer

10. A recipe for 18 cookies calls for 1 cup of chocolate chips. How many cups of chocolate chips are needed for 3 dozen cookies? What kind of proportion, direct or indirect, did you use to answer this question?

Answer: 2 cups; direct proportion





Short Answer

11. Which of the following statements contain exact numbers?

A. There are 12 eggs in a dozen.

B. The accident injured 21 people.

C. The circumference of the Earth at the equator is 40 000 km.





Short Answer

11. Which of the following statements contain exact numbers?

A. There are 12 eggs in a dozen.

B. The accident injured 21 people.

C. The circumference of the Earth at the equator is 40 000 km.

Answer: Statements A and B contain exact numbers.





Extended Response

12. You have decided to test the effects of five garden fertilizers by applying some of each to separate rows of radishes. What is the variable you are testing? What factors should you control? How will you measure and analyze the results?





Extended Response

12. You have decided to test the effects of five garden fertilizers by applying some of each to separate rows of radishes. What is the variable you are testing? What factors should you control? How will you measure and analyze the results?

Answer: The type of fertilizer is the variable being tested. Control factors are the types of radishes, the amount of water and the amount of sunshine. One control row should be planted under the same control factors but with no fertilizer. There are at least four things that could be used to determine the results: size, quantity, appearance, and taste. Analysis might include bar graphs of each of these measurements for each of the five fertilizer types and the no-fertilizer control row.





Extended Response

13. Around 1150, King David I of Scotland defined the inch as the width of a man's thumb at the base of the nail. Discuss the practical limitations of this early unit of measurement.





Extended Response

13. Around 1150, King David I of Scotland defined the inch as the width of a man's thumb at the base of the nail. Discuss the practical limitations of this early unit of measurement.

Answer: A unit must be defined in a way that does not depend on the circumstances of the measurement. Not every thumbnail is the same size.

